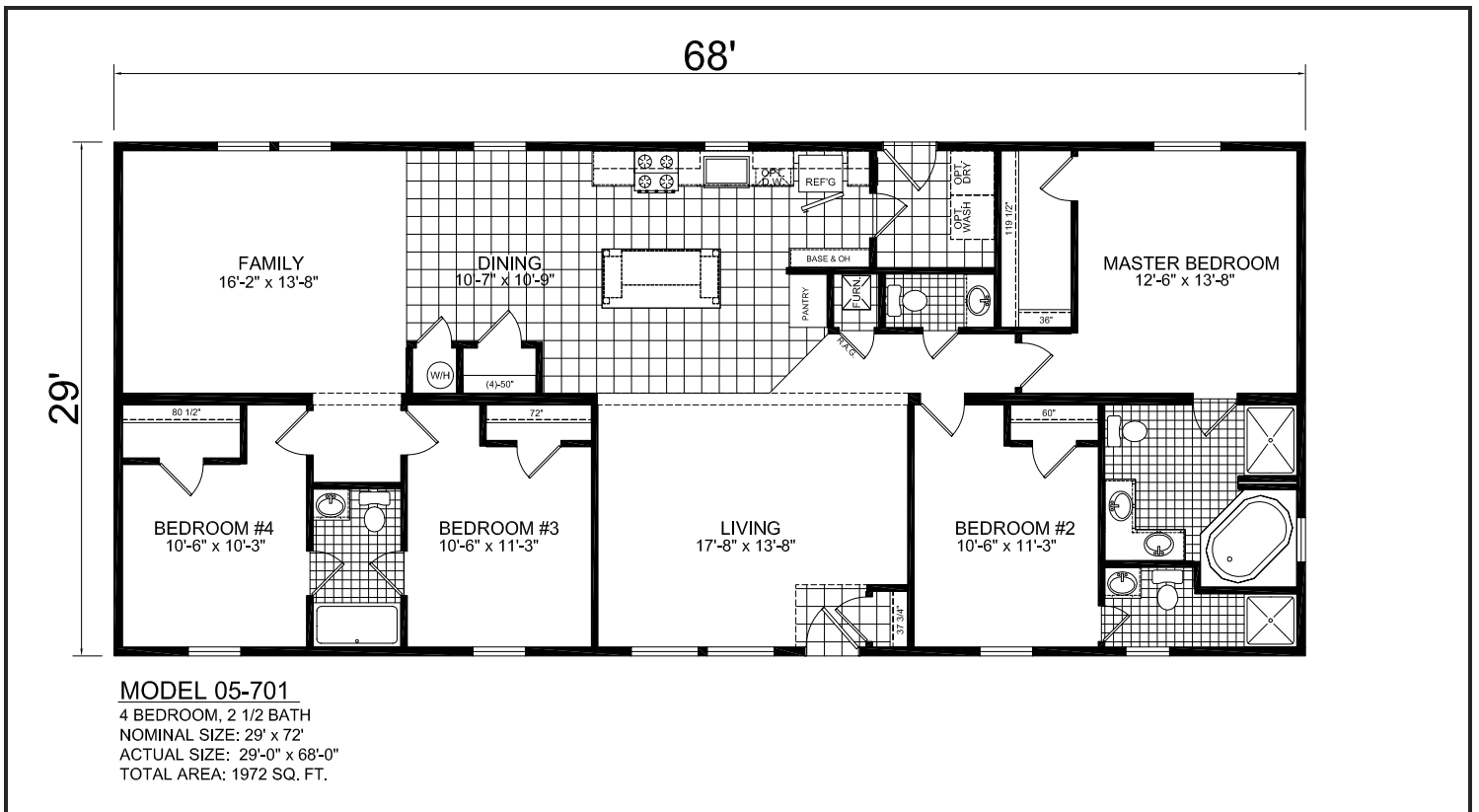



# Model: San Luis Ranch



 3200 ENTERPRISE AVE. YORK, NE 68467	APPROVER'S SEAL	MODIFICATIONS	MODEL: 05-701 HUD 29' X 68' 4 BEDROOM 3 1/2 BATH	SHEET:
			TITLE: LITERATURE PLAN	L-101
		PROPRIETARY AND CONFIDENTIAL THESE DRAWINGS AND SPECIFICATIONS ARE ORIGINAL. PROPRIETARY AND CONFIDENTIAL MATERIALS OF CHAMPION. COPYRIGHT © 1976-2012 BY CHAMPION	DRAWN BY: TRL SCALE: 1/8" = 1'-0"	DATE: 10-04-15



## Model 05-701

- 4 Bedroom
- 3 Bath
- 1,972 sq. ft.



The San Luis has a open living room that naturally flows to the kitchen and family room. This 4-bedroom home has an accessible bathroom for each bedroom. The master bathroom has his & hers sinks.

- 1 Acre Lot
- Standard Garage
- Private Water Well
- Qualifies for USDA Financing

**COLORADO**  
**FACTORY MODULARS**  
*Building Homes Since 1984*

